

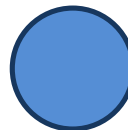
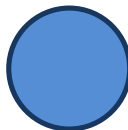
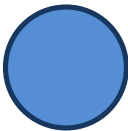
help



cag

• • •

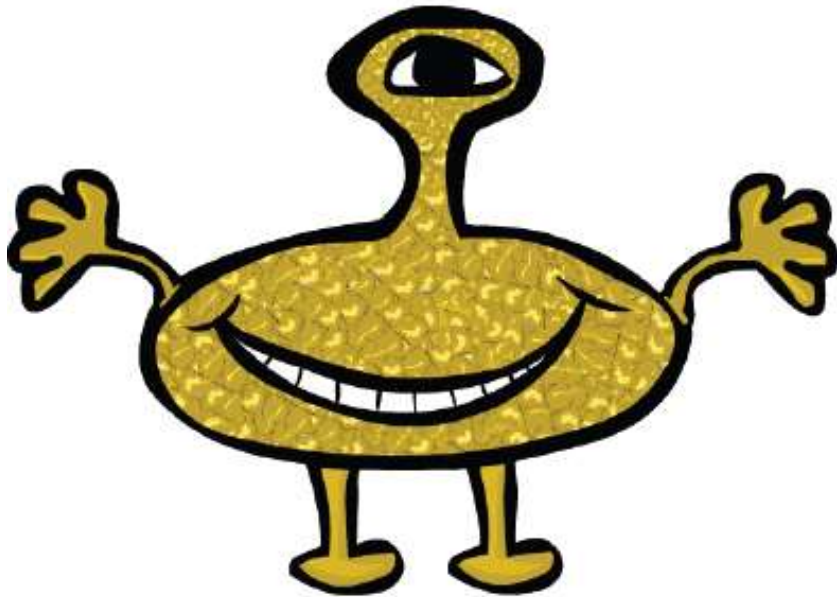
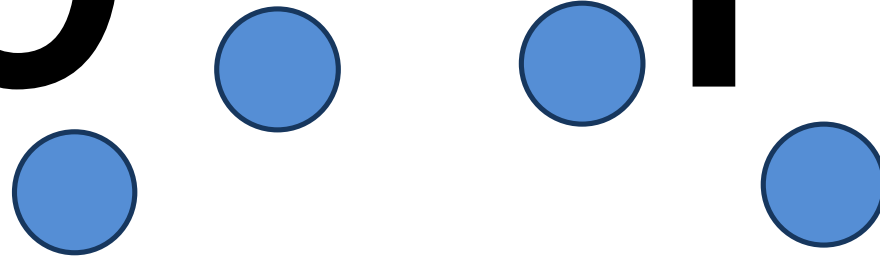
ped

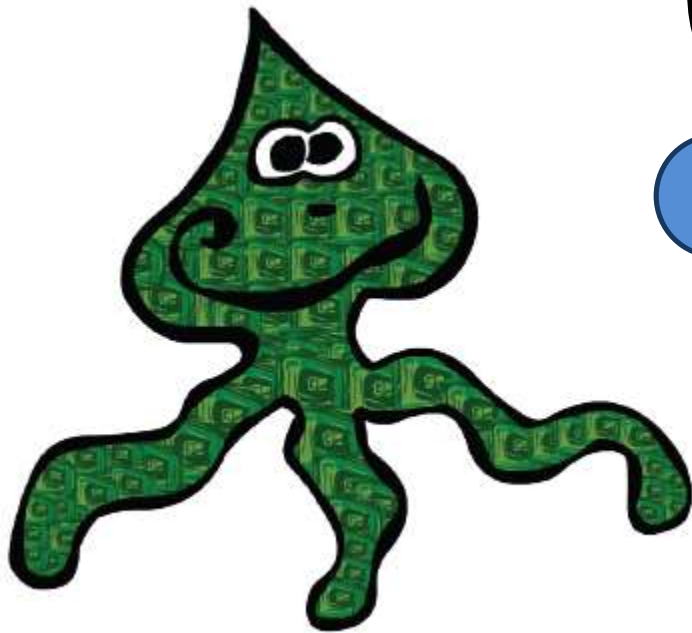


chab



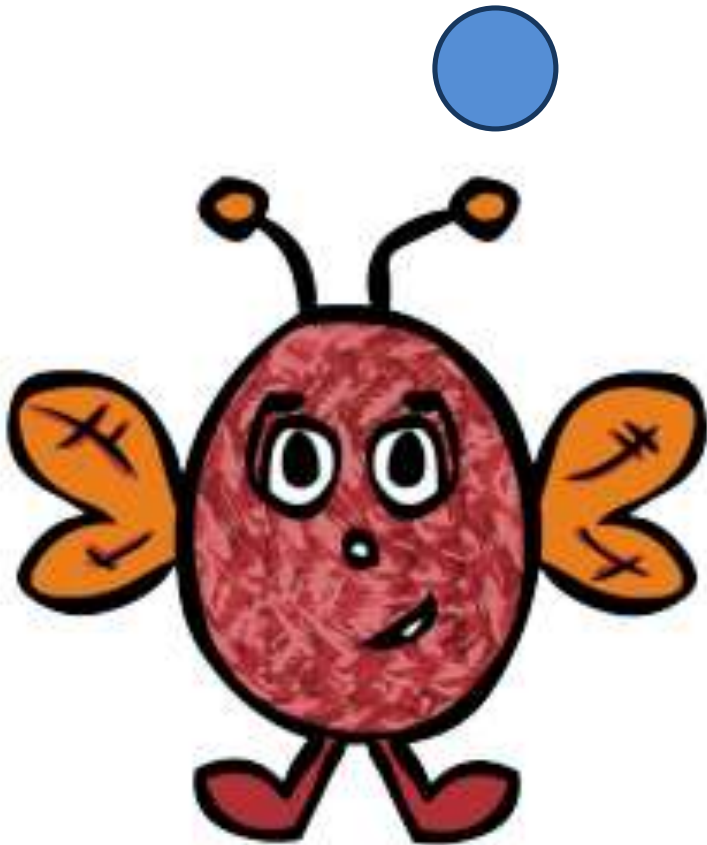
jirup

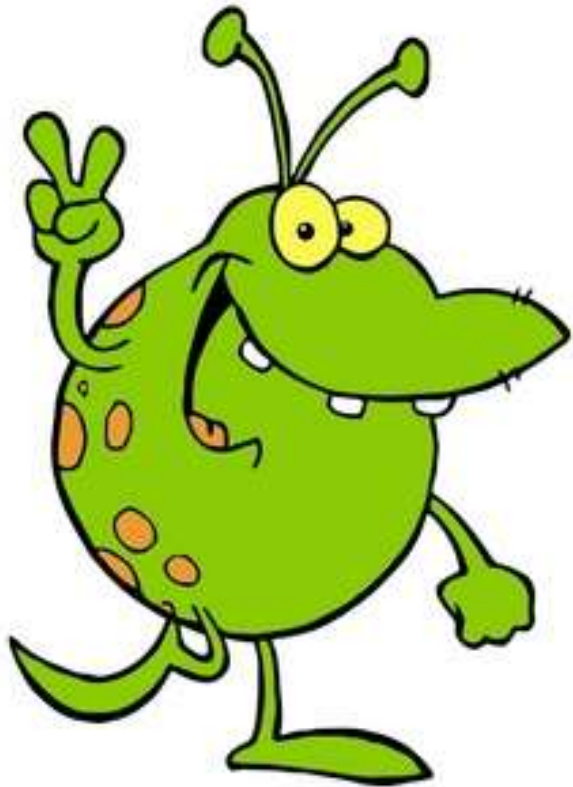




cliss

porth

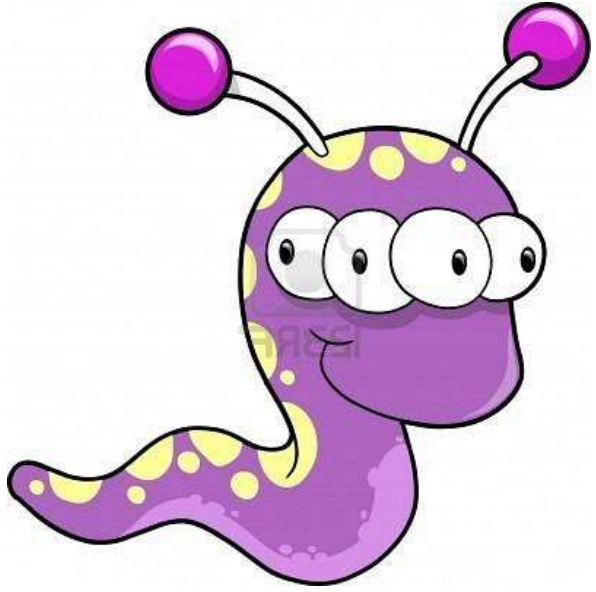
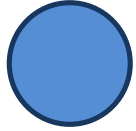
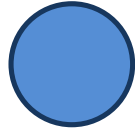
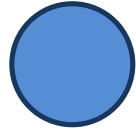




vair



jound



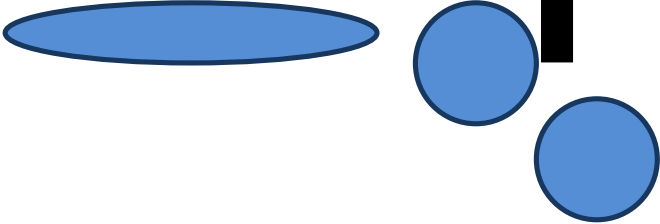


fape

grit

The word "grit" is written in a bold, lowercase, black sans-serif font. The letter 'g' has a blue circle at the bottom of its tail. The letter 'r' has a blue circle at the bottom of its stem. The letter 'i' has a blue circle at the bottom of its stem and a black dot above it. The letter 't' has a blue circle at the bottom of its stem.

chip

The word "chip" is written in a bold, black, lowercase sans-serif font. Below the letters, there are three blue shapes: a horizontal oval under the "ch", a circle under the "i", and a smaller circle under the "p".

stars

The word "stars" is written in a bold, black, sans-serif font. Below the letters, there are four blue shapes: a circle under the 's', a circle under the 't', a horizontal oval under the 'a', and a circle under the 's'.

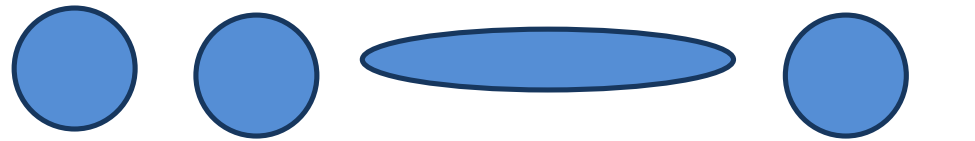
flame

The word "flame" is written in a bold, black, sans-serif font. There are four blue circular dots: one above the 'a', one above the 'm', one below the 'f', and one below the 'e'. A thick blue curved arrow starts from the top of the 'a', goes up and over the 'm', and ends with a downward-pointing arrowhead at the top of the 'e'.

slight

The word "slight" is written in a bold, black, sans-serif font. Below the letters, there are decorative blue elements: a blue circle under the 's', a blue circle under the 'l', a blue oval under the 'igh', and a blue circle under the 't'. The oval is positioned such that it overlaps the bottom of the 'i' and 'g'.

croak

A phonetic diagram for the word "croak". The word is written in a large, bold, black sans-serif font. Below the letters, there are four blue shapes representing articulation points: a circle under 'c', a circle under 'r', a horizontal oval under 'o', and a circle under 'k'.




slope

The word "slope" is written in a bold, black, sans-serif font. There are five blue circular dots: one below the 's', one below the 'l', one below the 'p', one above the 'o', and one above the 'e'. A blue curved arrow starts from the top of the 'o' and points to the top of the 'e'.

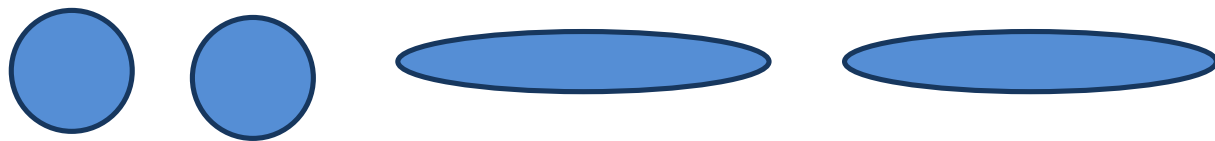
tube

The word "tube" is written in a bold, black, sans-serif font. It is decorated with three blue circular dots: one at the top center, one at the bottom left, and one at the bottom right. A thick blue arch connects the top of the 't' to the top of the 'e'.

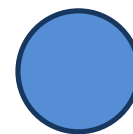
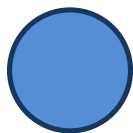
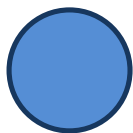
stern

The word "stern" is written in a bold, black, sans-serif font. Below the letters, there are four blue shapes: a circle under the 's', a circle under the 't', a horizontal oval under the 'e', and a circle under the 'n'. These shapes are positioned directly below the corresponding letters.

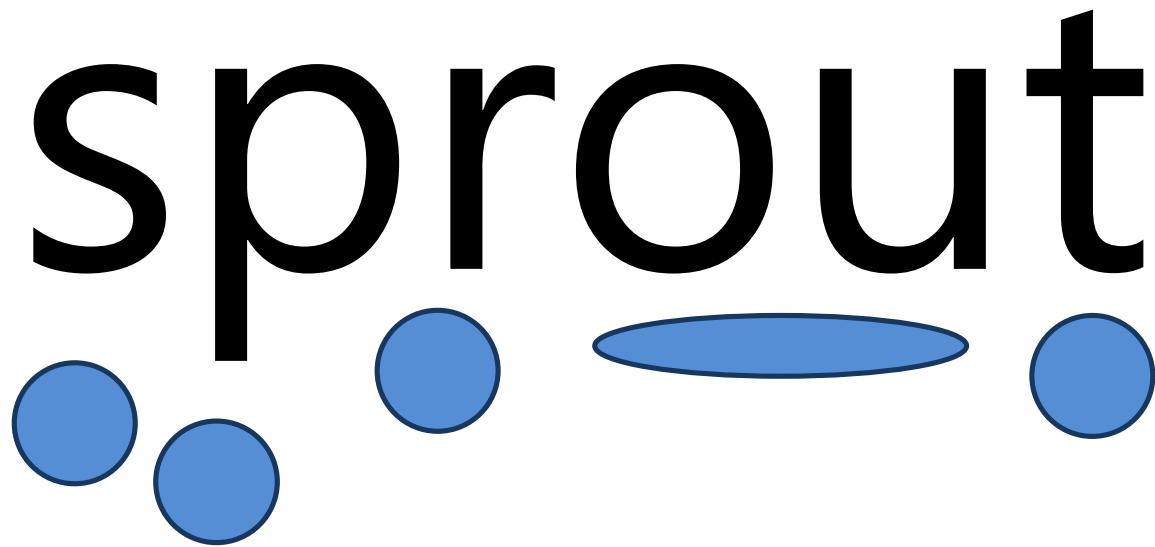
scorch



drown



sprout

The word "sprout" is written in a bold, black, sans-serif font. Below the letters, there are several blue shapes: two circles under the 's', two circles under the 'p', one circle under the 'r', a horizontal oval under the 'o', and one circle under the 't'. These shapes are arranged to suggest a sprout with leaves and a stem.